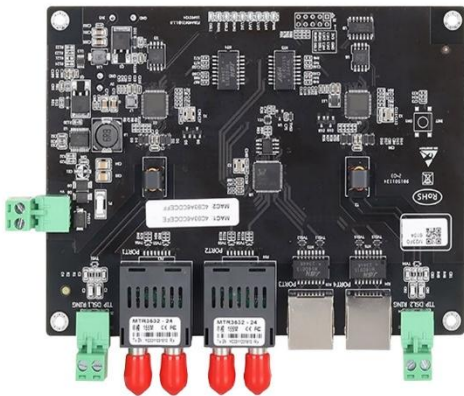


CES1204A

2×DSL + 4×100M Ethernet Ports Embedded Intrinsically Safe Ethernet Extender



- 4×100M ethernet ports, 2×DSL ports
- Ethernet ports support 4×copper ports or 2×fiber ports + 2×copper ports
- DSL ports enable long-distance communication via twisted-pair cables, with a maximum reach of 1.1km
- Fiber ports support SC/FC/ST connector, single mode/multi-mode, wavelength, and transmission distance optional
- Copper ports support 10/100M auto-sensing, full/half duplex, auto MDI/MDI-X, plug and play, convenient and fast
- Comply with IEEE1901 and HomePlug-AV (HPAV) standards
- Support DC 12~32V power input, conforming to intrinsically safe circuit design standards
- -20°C~+75°C operating temperature range

Product Description

The CES1204A series is a dual DSL embedded intrinsically safe Ethernet extender specifically designed for industrial communication network dedicated line transmission applications. It supports 4×Gigabit Ethernet ports, 2×DSL ports, and DC 12~32V power input, meeting intrinsic safety design requirements. This series enables paired connections via DSL interfaces to transmit Ethernet signals over twisted-pair telephone cables at distances up to 1.1km. This overcomes the 100m transmission limitation of standard Ethernet ports, reducing network equipment and cabling installation costs. DSL interfaces comply with IEEE1901 and HomePlug-AV (HPAV) standards. The 100M Ethernet port offers optional configurations: 4×100M copper ports or 2×100M fiber ports+ 2×100M copper ports. Each 100M copper port features 10/100M auto-negotiation, supports full-duplex or half-duplex modes, and automatically detects MDI/MDI-X connections. Utilizing a store-and-forward mechanism, it delivers robust bandwidth processing capabilities, automatically identifies packet errors, minimizes transmission failures, and ensures stable, reliable, and efficient data transfer. The hardware features a fanless, intrinsically safe, wide-temperature design with embedded installation. Operating within -20°C to +75°C, it employs industrial-grade components and passes rigorous high/low-temperature, safety, and EMC testing to meet demanding industrial environments. It is widely applicable in industrial automation, integrated energy systems, smart cities, rail transit, intelligent transportation, and smart factories.

Technical Specifications

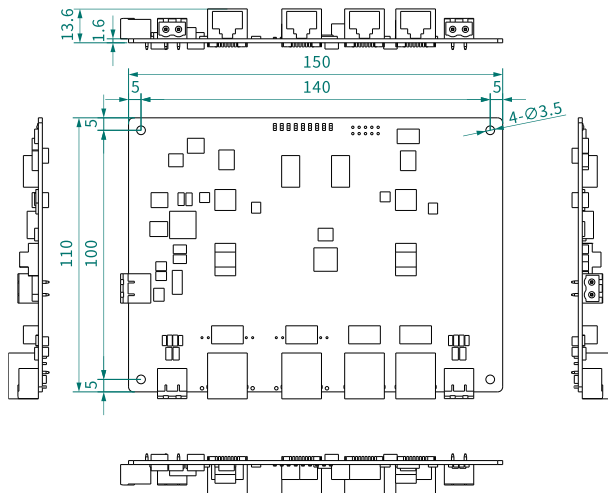
Switch Capability	
Backplane Bandwidth	1.6Gbps
Buffer Size	768kbit
MAC Table Size	2K
Interface	
DSL Port	2×DSL ports, using 2-position 5.08mm spacing terminal blocks, communication distance 1.1km (10Mbps) (Cable Requirements: 2-core twisted pair telephone cable with 0.5mm ² or larger cross-section, twist pitch <25mm)
100M Fiber Port	2×100Base-FX fiber port (SC/FC/ST, single-mode/multi-mode, wavelengths and transmission distances are optional)
100M Copper Port	2/4×10/100Base-T(X) auto-sensing RJ45 ports, support full-duplex/half-duplex and auto MDI/MDI-X connection
Status LED	Power indicator light, DSL operation indicator light, DSL interface indicator light, Ethernet interface indicator light, support external routing of indicator light signals
Power Supply	
Input Voltage	DC12~32V
Power Consumption	<2.5W@DC12V (CES1204A), <4.3W@DC12V (CES1204A-2F)
Connection	2-position 5.08mm pitch terminal block
Power Protection	Overcurrent protection, overvoltage protection, reverse polarity protection, pre-charge
Physical Characteristics	
Dimensions	150×110×13.6 mm
Installations	Embedded
Weight	107g (CES1204A), 122g (CES1204A-2F)

Working Environment	
Operating Temp	-20°C ~+75°C
Storage Temp	-40°C~+85°C
Relative Humidity	5%~95% (non-condensing)
Industry Standard	
EMC	<p>IEC 61000-4-5 (Surge): Level 2 (Power supply, ethernet port, DSL port: common mode $\pm 1\text{kV}$, differential mode $\pm 0.5\text{kV}$)</p> <p>IEC 61000-4-4 (EFT): Level 3 (Power supply, ethernet port, DSL port: $\pm 2\text{kV}$)</p>

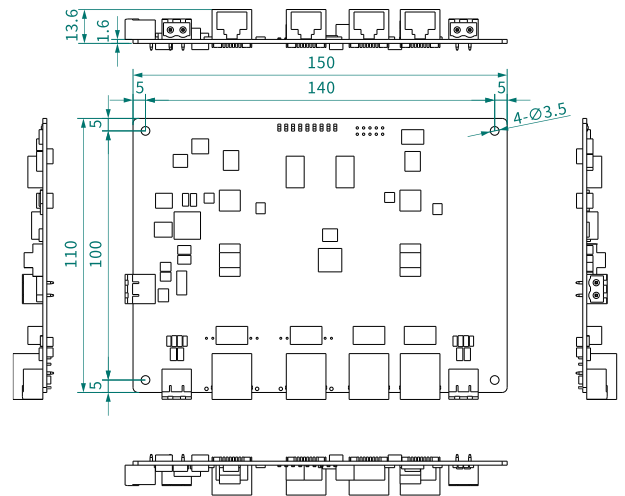
Dimensions

Unit: mm

CES1204A



CES1204A-2F



Ordering Information

Standard Model	100M Fiber Port	10/100M Copper Port	DSL Interface	Input Voltage
CES1204A	/	4	2	DC12~32V
CES1204A-2F	2	2	2	



Contact Us

COME-STAR COMMUNICATION(WUHAN) CO., LTD.

Address: Puneng Industrial Park, Fenghuang Garden 1st Road, East Lake High-Tech Development Zone, Wuhan, China.

Tel: +86-027-59257958

Mail: sales@come-star.com

Official site: www.come-star.com

Copyright © Come-Star All rights reserved